



CASE STUDY: Lottery Terminals

TURKISH LOTTERY AGENTS MOVE TO 3G MOBILE WIRELESS



CHALLENGE

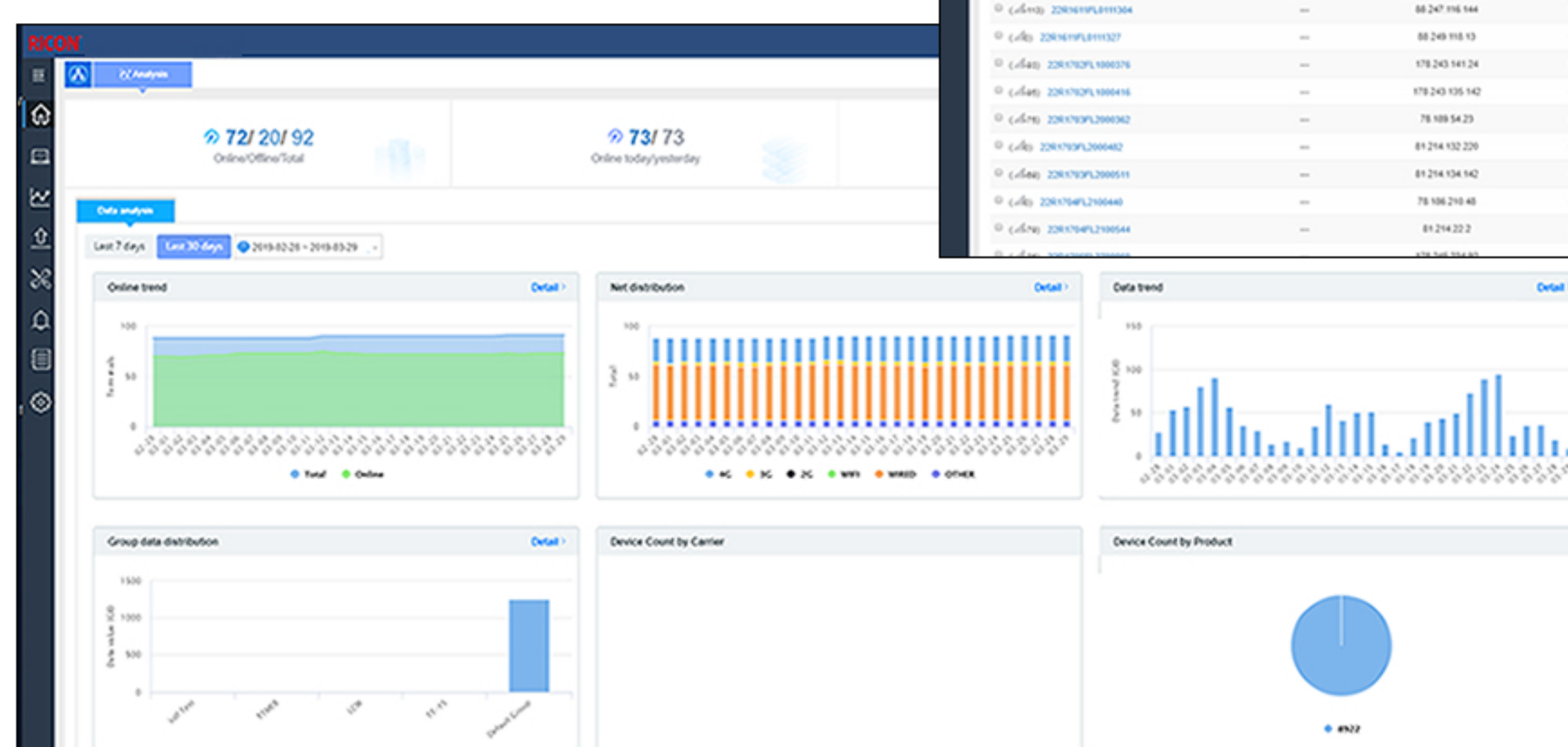
Milli Piyango's previous network was based on IP ADSL with over five thousand lotto terminals distributed throughout Turkey. The efficiency of the system was not optimal, with slow transaction speeds on a network that had limited scalability. In order to overcome the above limitations the system required to be migrated to an IP network. The previous network relied on ADSL to provide remote connectivity to the network. Furthermore a large number of remote locations where lacking ADSL coverage. Therefore other complimentary technologies where required. The move to 3G wireless mobile technologies as a suitable alternative due to its wide coverage, provided reduced cost of ownership as well as simplified provisioning procedures and reduced costs. The 3G mobile wireless system needed to:

- router to fit inside the lotery terminal cabinet,
- provide a safety mechanism to avoid unintentional SIM card manipulations,
- support external magnetic antennas for routers,
- guarantee security and privacy in all the transactions,
- provide remote management software and custom scripting.

EQUIPMENT USED



- up to 21Mbps downlink speed,
- dual SIM capabilities,
- Ethernet 10/100, USB (optional),
- RS-232 transparent communication,
- external antenna,
- slim, sturdy design,
- secure and SIM protected,
- data transmission,
- ultra security – VPN support,
- NAT, DMZ host, DNS proxy, DynDNS,
- VPN, Ipsec, NTP, DHCP, icmp , etc.
- friendly instalation,
- extremely easy to use and configure.



Milli Piyango: state-owned Turkish national lottery, manages more than five thousand lottery outlets throughout Turkey.



GTECH Corporation: Gaming technology and services company, providing innovative technology, creative content and superior service; one of the world's largest commercial lottery operators and a market leader in gaming industry.

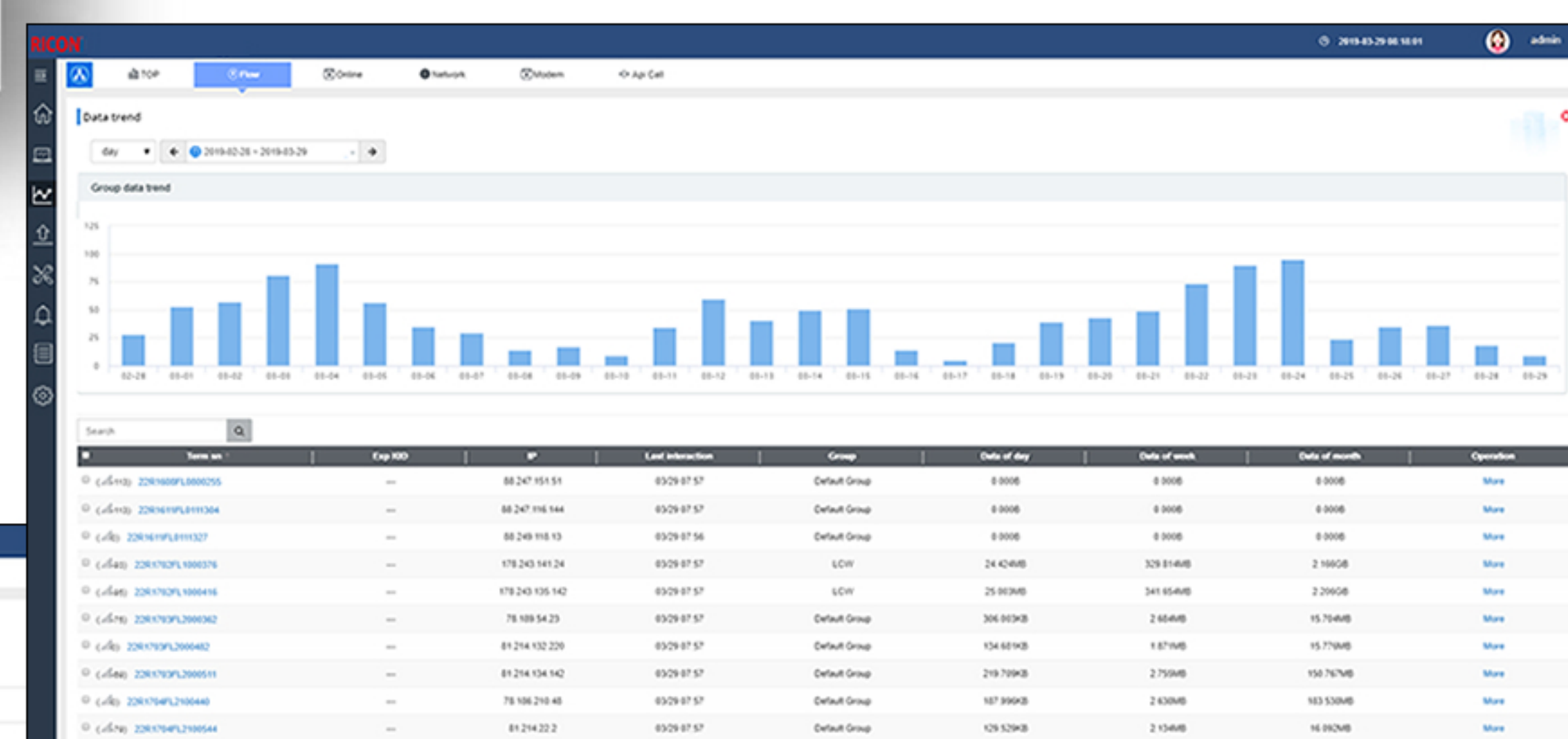


RICON Mobile: solution designer and manufacturer of RMS wireless products and RMS Ricon Management System software; provides reliable and secure mobile wireless networking solutions for a wide range of lottery applications.



RMS Ricon Management System

provides full control of multiply 3G routers for diagnostics and maintenance of all the mobile devices on the network.

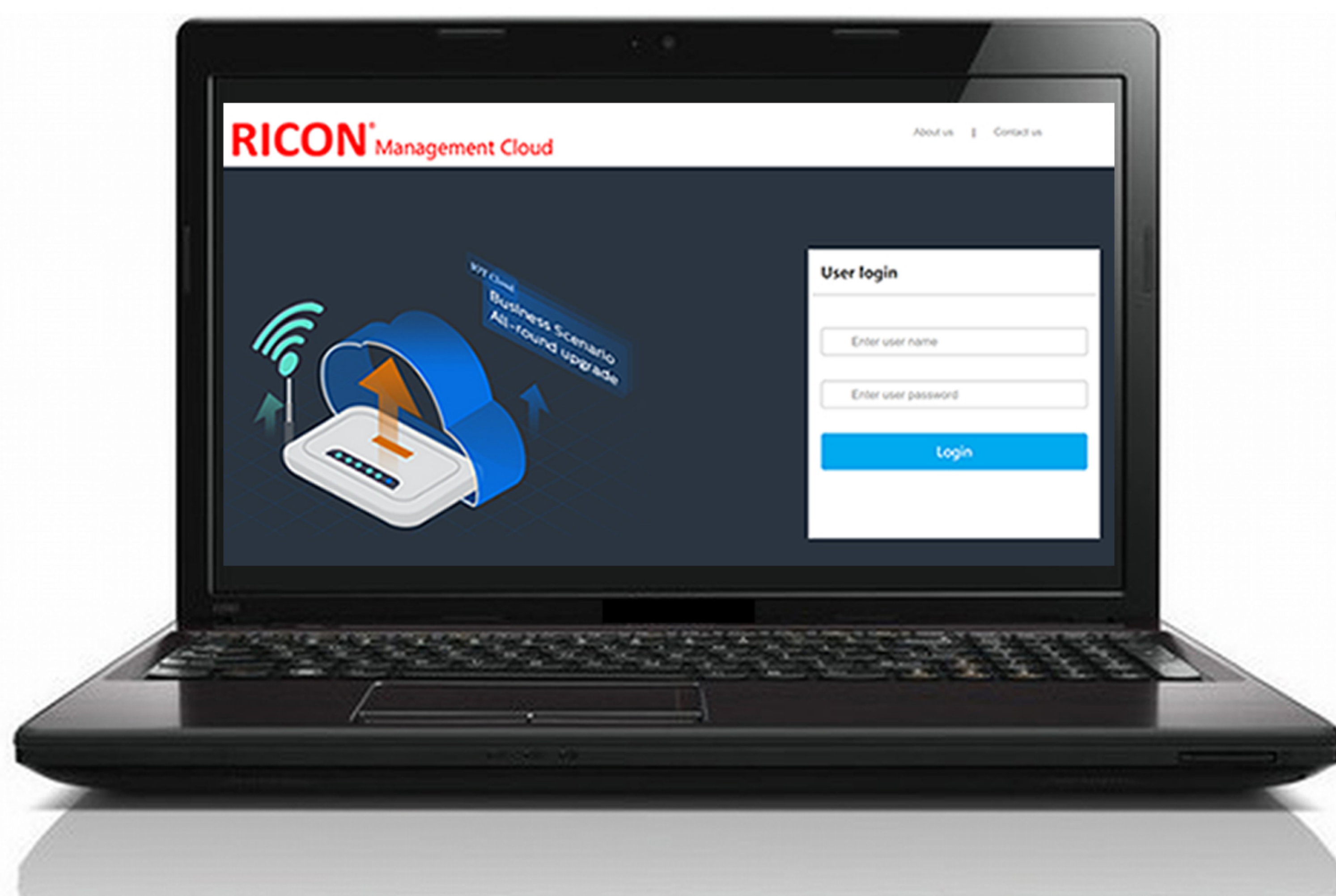


TURKISH LOTTERY AGENTS MOVE TO 3G MOBILE WIRELESS

RESULT

RICON 3G routers are connected to the GTech lottery terminals with via a 9 pin serial port interface. The antenna used in RICON 3G wireless mobile router was able to be placed externally for optimal maximum signal strength. The routers dual SIM's are securely protected within the router making the dual SIM cards secure from any type of mechanical tempering or manipulation. Further to this an end-to-end encrypted IPSec VPN tunnel was established between RICON's wireless 3G router and the centralized data processing center, allowing seamless integration of remote terminals.

In brief RICON and GTECH fully accomplished the requirements set down by Milli Piyango and selected for the project 3G network carriers, to offer high quality service for the operation of Milli Piyango's lotto terminals. Now over 5000 stand-alone lottery terminals rely on RICON 3G wireless technology. Milli Piyango keeps ordering RICON routers and GTECH terminals whenever they need to deploy 3G remote wireless terminal.



RMS Ricon Management System, working with RICON S9921 3G routers and S9931 DSL routers, is monitoring connectivity of network and controlling devices remotely. It provides:

- detailed data stream,
- live reports,
- remote configuration,
- setting customized SLA terms,
- SLA based live alarms,
- batch remote configuration,
- scheduled remote configuration,
- scheduled remote firmware upgrade/downgrade,
- touchless installation,
- mutual backup (Dual SIM),
- live connectivity information.

How does it work?

