



RMSC REMOTE MANAGEMENT PLATFORM

RMSC - Ricon Management System is where the managing power of RICON 3G / 4.5 / 5G routers and Smart IoT technology come together. RMSC - Ricon Management System can be accessed remotely from anywhere on the Cloud. It allows the user to evaluate, identify, manage, check and solve any problem in a very short time. It can manage devices individually, in groups or regions remotely. With RICON RMSC, all RICON products on the network can be accessed instantly from the web environment, actual statistics and historical reports can be created.

RMSC is a powerful tool to quick deploy, push installation configuration files, push new firmware updates and request data logs to identify past problems about any data log on the devices.

RMSC RICONAPPS Zero-Touch Provisioning



GSM No

Ricon S/N

Location

Start Installation

Select the GSM line number you used in the installation and follow the instructions by clicking the "Start Installation" button.

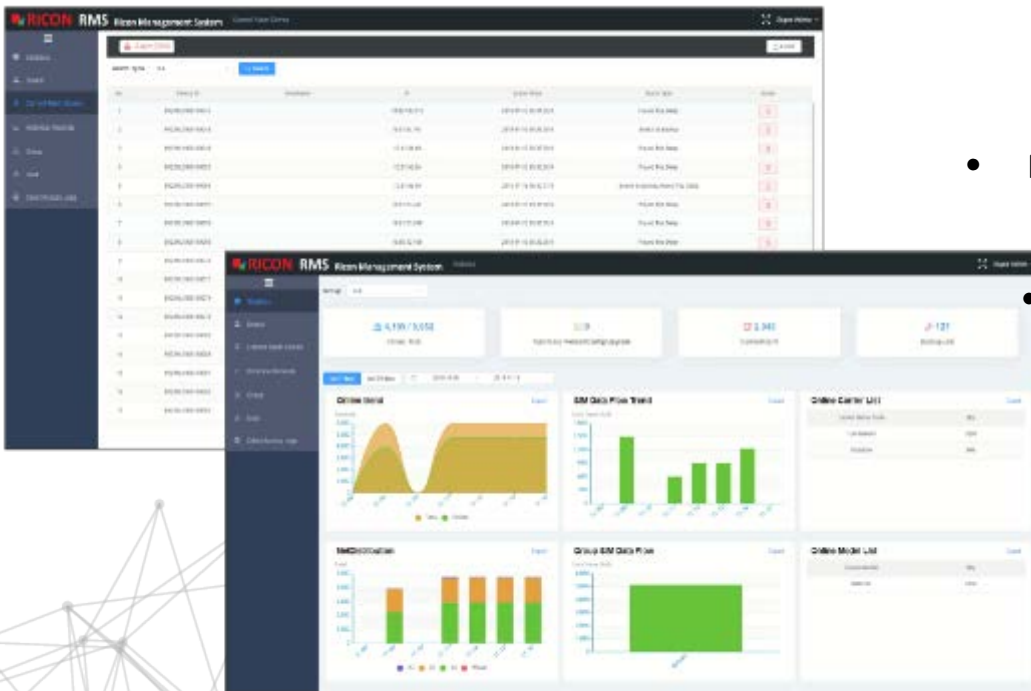
RMSC RICONAPPS Zero-Touch Provisioning Features

- No need GSM Data Registration and IP Address Assignment
 - Runs on GSM Radio Frequency bands only
- GSM Attachment is enough for configuration deployment
- No need qualified engineering resources; any simple SmartPhone user can deploy configuration
- Device Serial Number, GSM SIM Card Info and Location info are matched on AIR during the deployment
 - No need for specific logistics
- No need for pre-configuration in a warehouse
- Takes from 40~90 seconds for full configuration including Tunnel configuration parameters
- Automated inventory creation in the background
 - Live watch for deployment quantity and sites
 - Multitasking web based simple to use UI

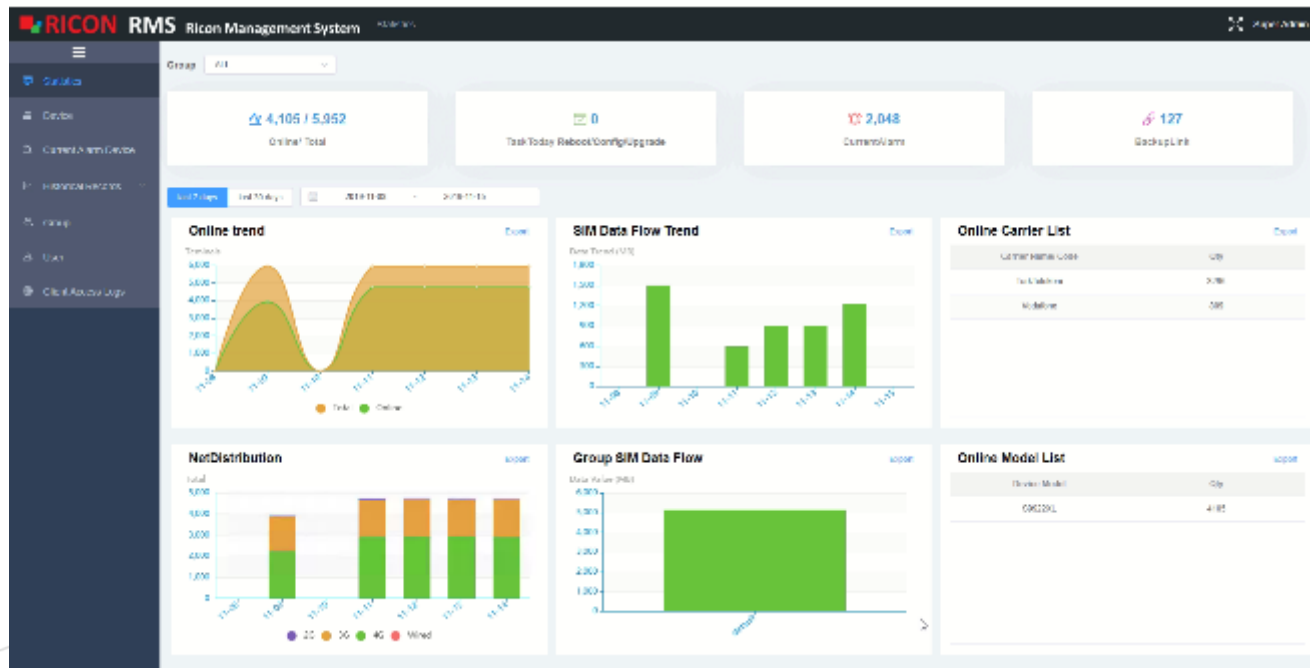
RMSCC REMOTE MANAGEMENT PLATFORM

RMSC RICON Management System Features

- Zerotouch support developed by Ricon
 - Remote configuration with ZeroTouch
 - Installation date and time reports
- Monitoring base station connection details for the operator's network
 - Group-based tracking by creating device groups according to the company hierarchy
- Remote configuration to all devices registered in the RMSC system
 - Scheduled remote configuration by specifying date and time
 - Scheduled installation support for Upgrade / Downgrade
 - Updating multiple terminal configurations simultaneously
 - Setting customized SLA alert thresholds
 - Monitoring SLA-based live alaRMSC
 - Monitoring live connection information
 - Creating and viewing live reports
 - Monitoring detailed data flow information of terminals
 - Trend analysis, detailed data flow reports of terminals
 - Generating terminal alaRMSC reports for trend analysis
 - Inventory list live tracking
 - Tracking mobile data usage reports



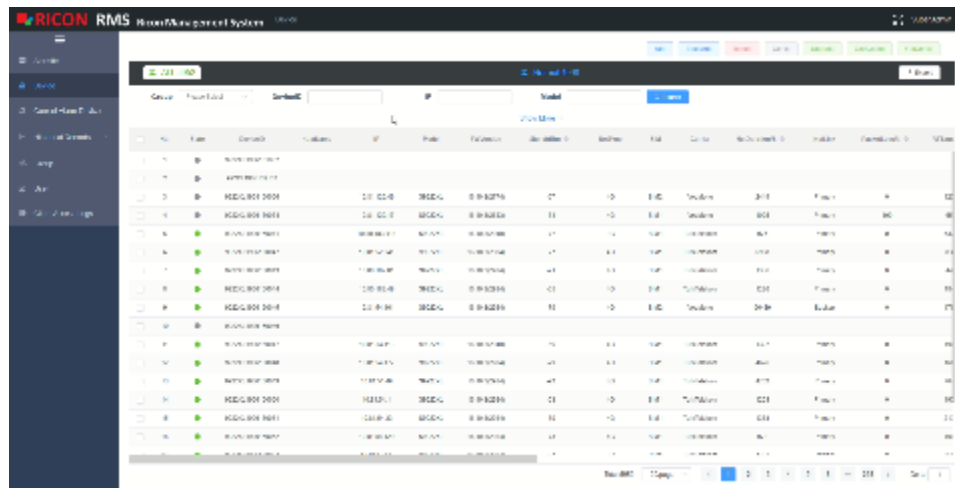
RMSC RICON MANAGEMENT SYSTEM



Statistics Module

On the RMSC Statistics module, you can view weekly and monthly connection and SIM data flow trend of the devices registered in RMSC, offline operator list, net signal (2G, 3G, 4G, 5G) distribution, SIM data flow in groups and online device models on the dashboard. You can make historical analyzes and define alarms.

RMSC RICON MANAGEMENT SYSTEM

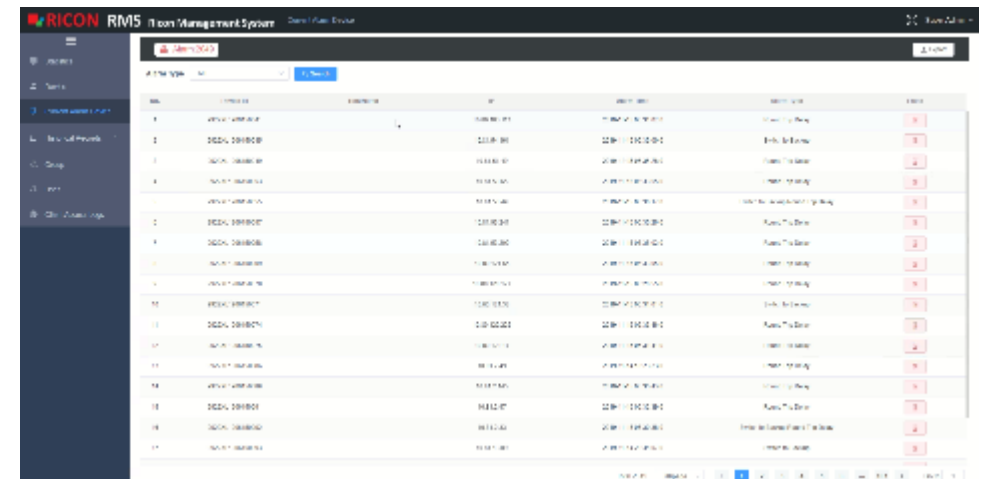


The screenshot displays the 'Devices Module' in the RICON RMS interface. It features a table with columns for device ID, name, device type, status, IP, model, software version, signal strength, signal type, SIM card, operator name, and running time. The table lists several devices, each with a green status indicator and a 'Refresh' button next to it.

ID	Name	Device	Status	IP	Model	Software	Signal	Type	Sim	Operator	Running
1	HEGIBO0001	HEGIBO0001	Online	10.10.10.1	HEGIBO0001	1.0.0.0	-100	4G	SIM1	China Mobile	10:00:00
2	HEGIBO0002	HEGIBO0002	Online	10.10.10.2	HEGIBO0002	1.0.0.0	-100	4G	SIM1	China Mobile	10:00:00
3	HEGIBO0003	HEGIBO0003	Online	10.10.10.3	HEGIBO0003	1.0.0.0	-100	4G	SIM1	China Mobile	10:00:00
4	HEGIBO0004	HEGIBO0004	Online	10.10.10.4	HEGIBO0004	1.0.0.0	-100	4G	SIM1	China Mobile	10:00:00
5	HEGIBO0005	HEGIBO0005	Online	10.10.10.5	HEGIBO0005	1.0.0.0	-100	4G	SIM1	China Mobile	10:00:00

Devices Module

You can monitor as a table for connection status (online / offline) of devices registered in RMSC, device ID, host name, IP, model, software version, signal dBm value, signal type, which SIM card it connects to (SIM1 / SIM2), operator name, how long the device has been running, loss of packet in percentage on RMSC Devices module.



The screenshot displays the 'Current Alarm Device Module' in the RICON RMS interface. It features a table with columns for device ID, name, device type, alarm time, IP, model, software version, signal strength, signal type, SIM card, operator name, and alarm type. The table lists several alarm events, each with a red status indicator and a 'Refresh' button next to it.

ID	Name	Device	Alarm Time	IP	Model	Software	Signal	Type	Sim	Operator	Alarm Type
1	HEGIBO0001	HEGIBO0001	2023-10-10 10:00:00	10.10.10.1	HEGIBO0001	1.0.0.0	-100	4G	SIM1	China Mobile	Signal Loss
2	HEGIBO0002	HEGIBO0002	2023-10-10 10:00:00	10.10.10.2	HEGIBO0002	1.0.0.0	-100	4G	SIM1	China Mobile	Signal Loss
3	HEGIBO0003	HEGIBO0003	2023-10-10 10:00:00	10.10.10.3	HEGIBO0003	1.0.0.0	-100	4G	SIM1	China Mobile	Signal Loss
4	HEGIBO0004	HEGIBO0004	2023-10-10 10:00:00	10.10.10.4	HEGIBO0004	1.0.0.0	-100	4G	SIM1	China Mobile	Signal Loss
5	HEGIBO0005	HEGIBO0005	2023-10-10 10:00:00	10.10.10.5	HEGIBO0005	1.0.0.0	-100	4G	SIM1	China Mobile	Signal Loss

Current Alarm Device Module

According to the alarm scenarios created for the devices registered in RMSC; You can view information such as device ID, host name, IP, alarm time and alarm type on the table.