



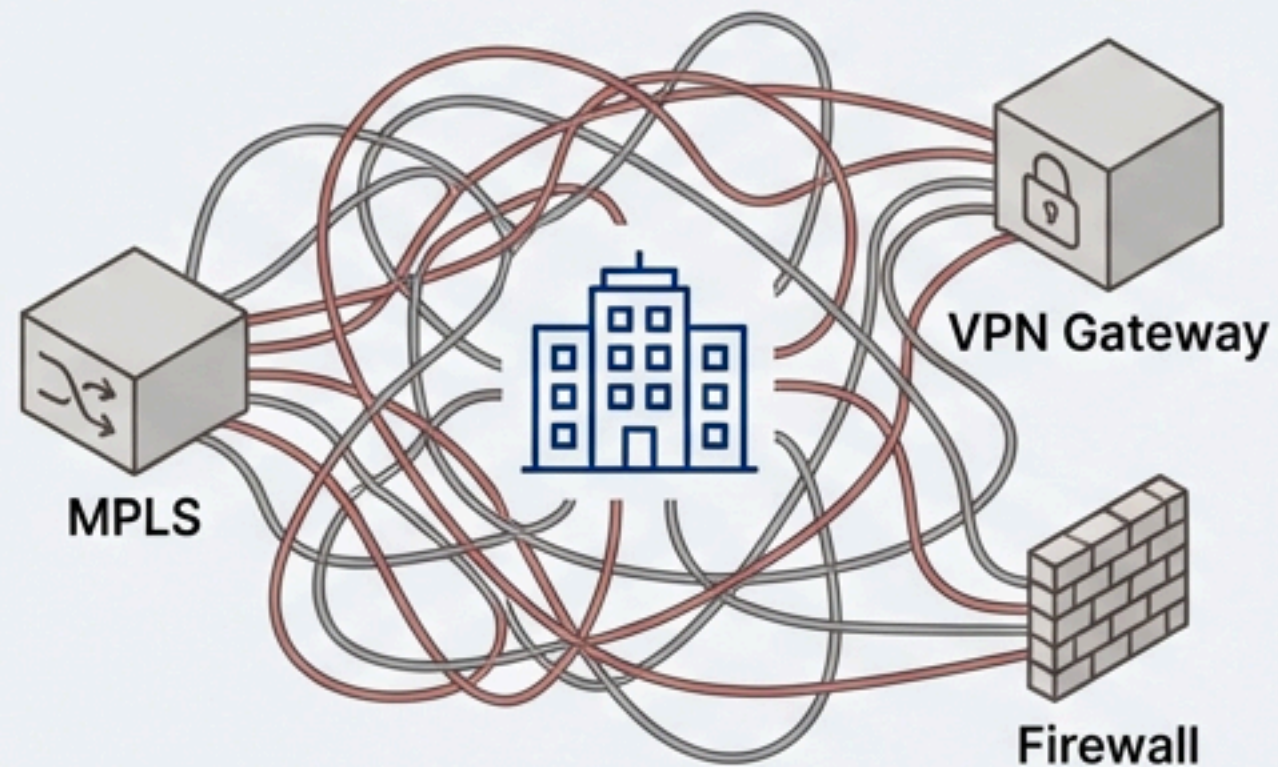
# **The Future of Network Management and Security: RICON SASE & SD-WAN**

**National Open Source**

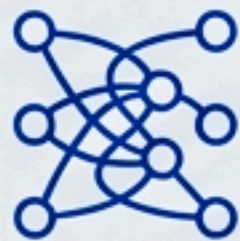


# Why are traditional network architectures inadequate?

Old Way



Modern Needs



**Increased Complexity:**  
Managing numerous devices and locations.



**High Costs:**  
The decentralized structure expands the attack surface and makes central control more difficult.



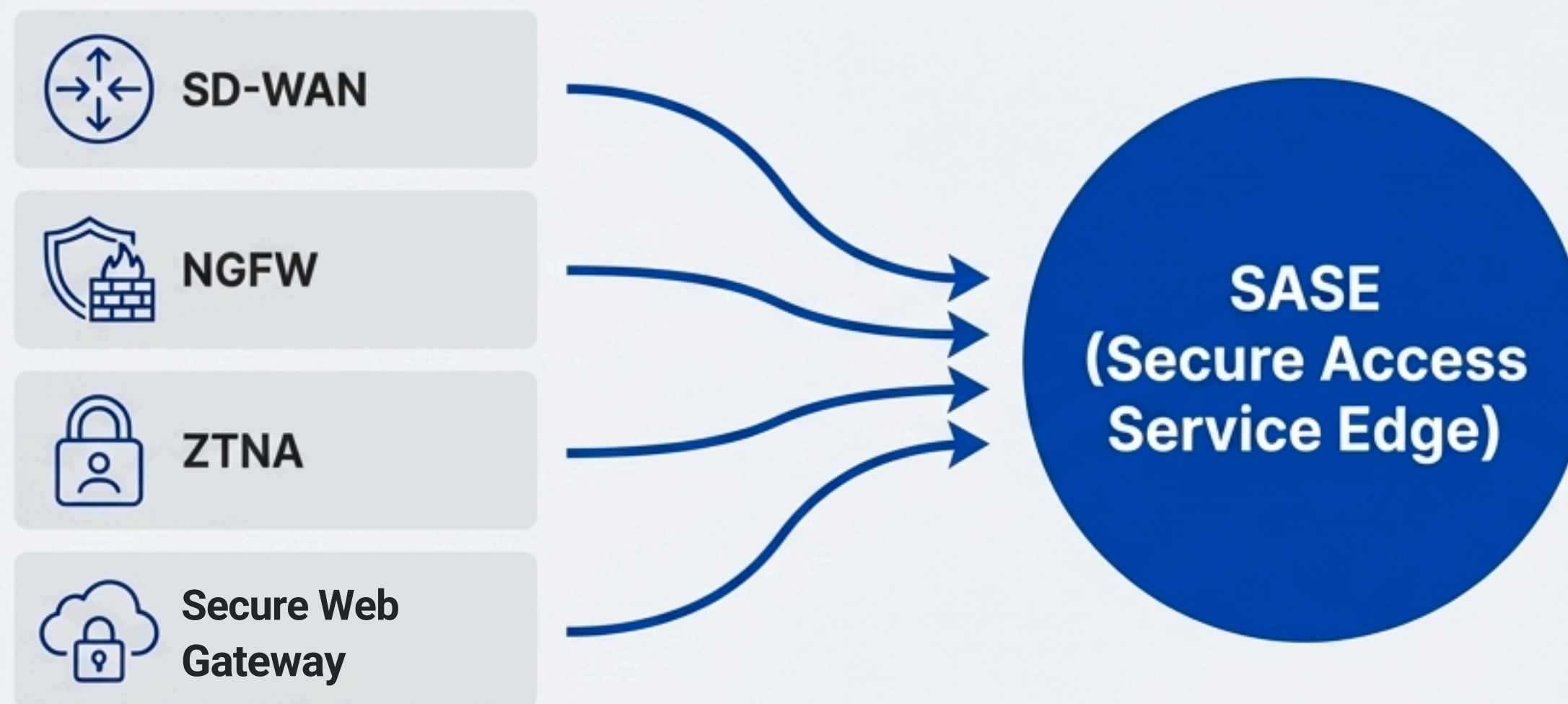
**Security Vulnerabilities:**  
The decentralized structure expands the attack surface and makes central control more difficult.



**Low Performance:**  
Inefficient access to critical cloud applications.



## **Solution: SASE Architecture Combining Networking and Security in a Single Structure**



SASE is a global cloud service that combines network and network security services, securely connecting users and devices to applications and data wherever they are.

### **Reduced Complexity**

Management from a single platform.

### **Advanced Security**

Consistent policies at every point of contact.

### **Increased Flexibility**

Scale quickly to meet your needs.

# Ricon's Approach: Roqos Core Integrated Cybersecurity and SD-WAN Platform



## Ricon Roqos Core

It is an integrated platform designed to modernize enterprise networks, combining SD-WAN (Software Defined Wide Area Network) capabilities with advanced cybersecurity features under the SASE architecture.



# What Makes Us Different?

## Unique Advantages Through Patented Technologies



### **OmniVPN®: Without a Static IP**

#### **Uninterrupted and Secure Connection**

Our patented OmniVPN technology, CG-NAT, and restrictive networks provide secure and seamless connections without the need for a static IP. It eliminates the complexity of traditional VPNs.



### **PrivateSASE™: Data Sovereignty**

#### **and Complete Control**

For organizations that cannot use the public cloud or that prioritize data sovereignty, it offers the possibility to host the control plane in your own data center.



# Smart and Proactive Security Layers

## In-depth Traffic Analysis

With **ntopng** integration, analyze your network traffic in depth to instantly identify abnormal activities and performance bottlenecks.



## Advanced Threat Protection

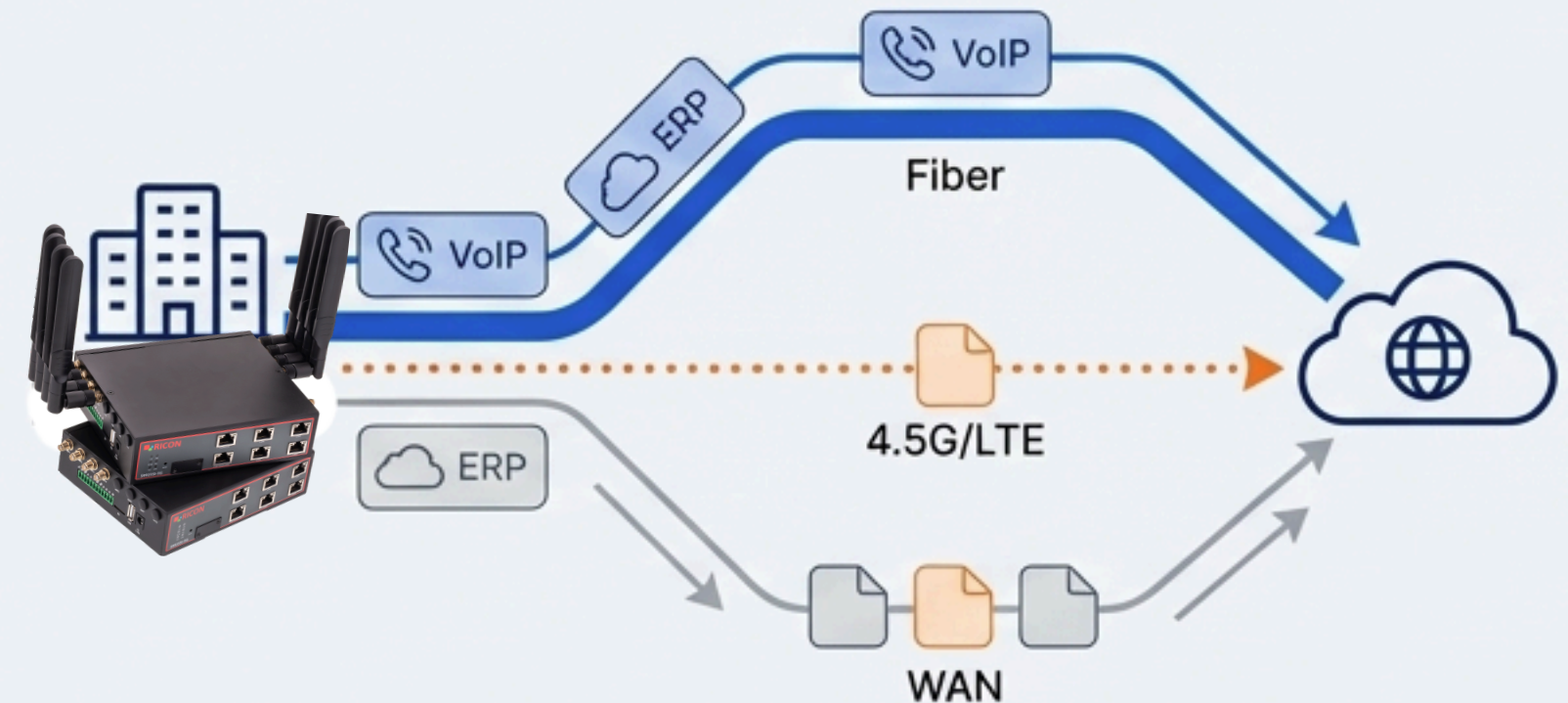
Protect your network from advanced threats with **CountryBlock**, which blocks country-based IP addresses at line speed, and its integrated **Intrusion Prevention System (IPS)**.

## Automated Device Discovery and Vulnerability Scanning

Automatically discover all devices on your network with **Device Fingerprinting** and an integrated **OpenVAS-based** scanner to proactively identify security vulnerabilities.



# Modernize your network and improve performance with advanced SD-WAN.



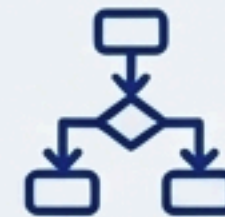
## High Availability

Automatic and seamless switching to backup lines such as 4.5G/LTE (Failover).



## Load Balancing

Optimize bandwidth and performance by actively using multiple WAN lines.



## Policy-based Routing

Prioritizing the traffic of critical applications (e.g., VoIP, ERP) over the highest performing line.



## Deep Package Inspection (DPI)

Traffic visibility and control at the application level.



# Zero Trust Architecture: "Never trust, always be right"



Ricon ZTNA prevents lateral threat activity by continuously verifying the identity of every user and device accessing the network and granting access only to the necessary resources with minimal privileges.



## Role-Based

Access based on the user's department or role.



## Time-Based

Access allowed only between specific hours or days.



## Geographic Location Based

Restricting/allowing access from specific countries or locations.



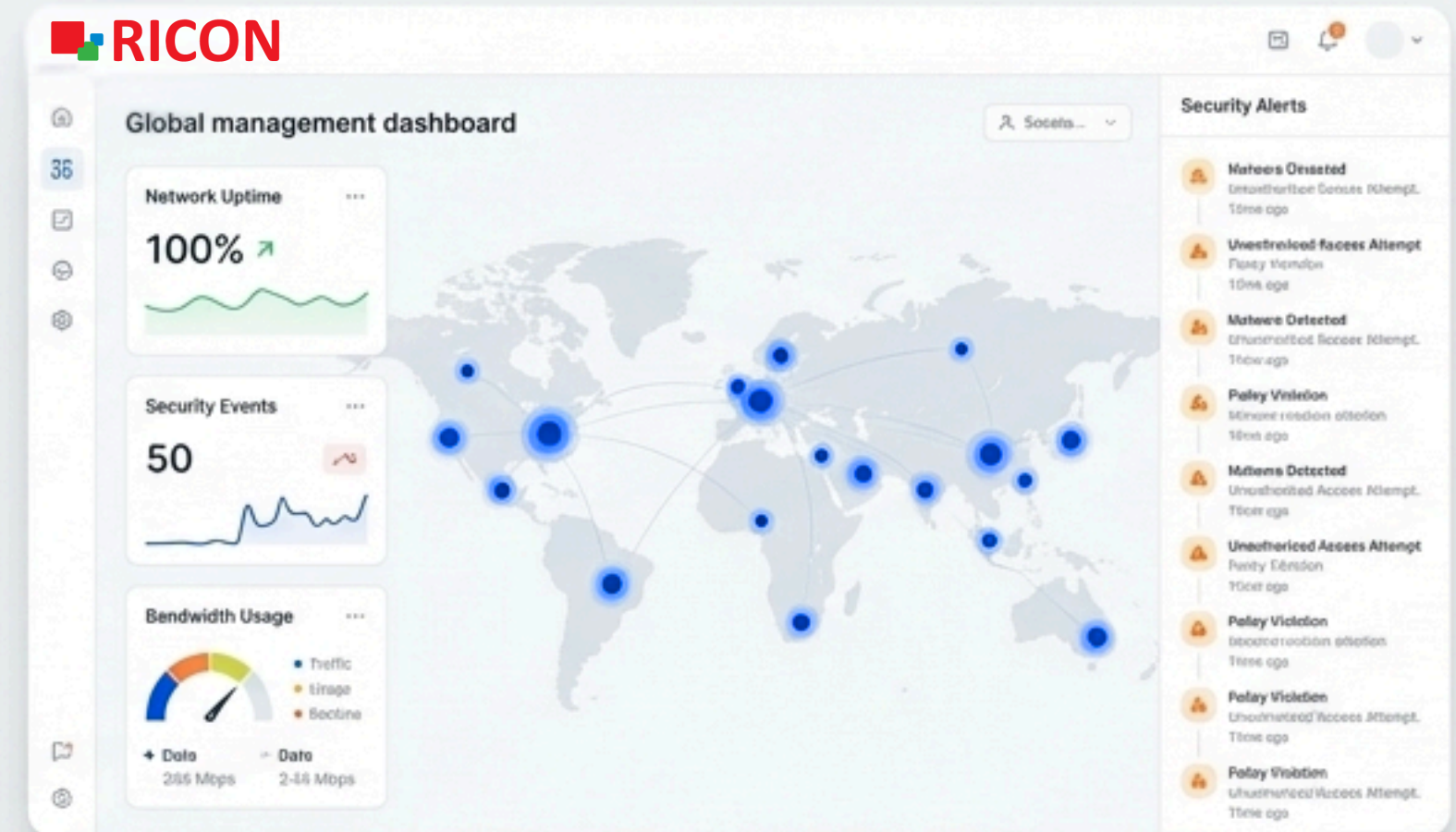
## Device Posture Check

Ensures only devices that comply with security policies can connect to the network.



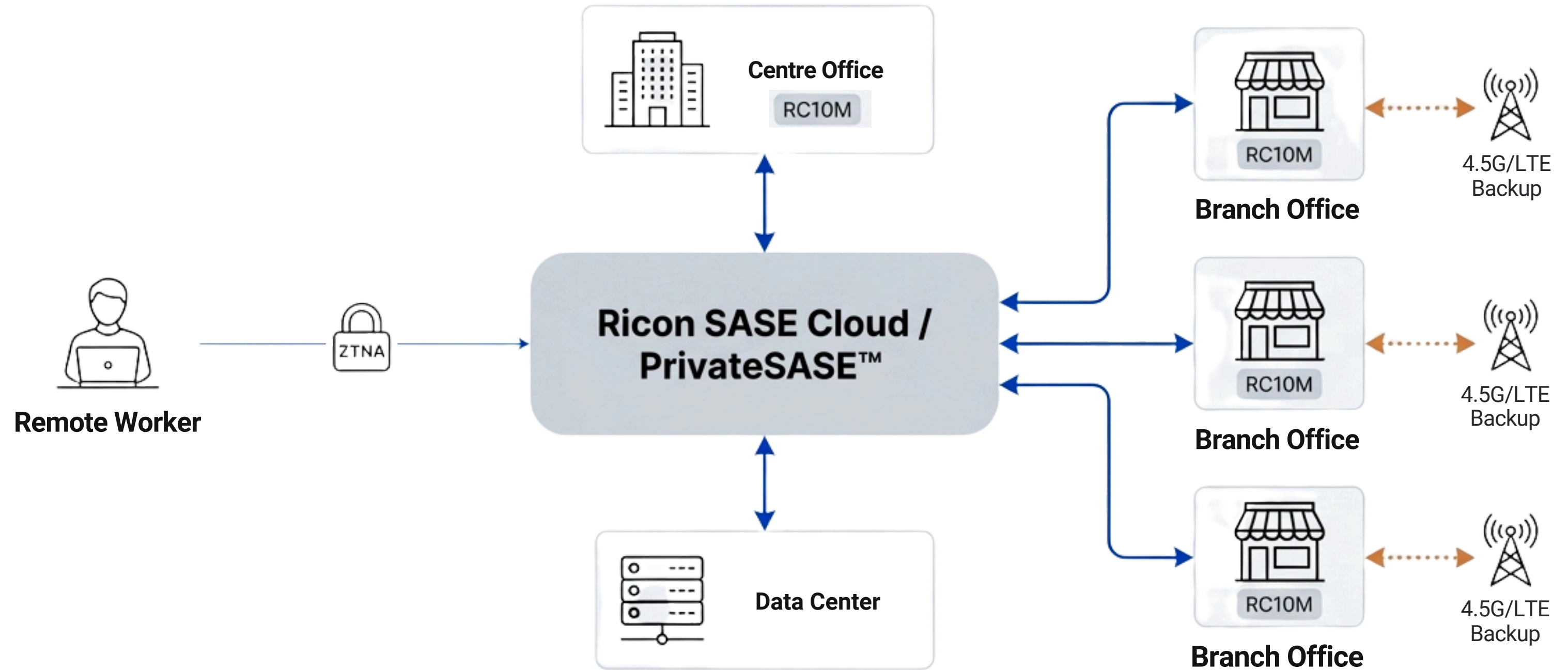
# Operational Efficiency: Centralized Management, Easy Distribution

- **Zero-Touch Provisioning:** Install and configure devices remotely in minutes, without the need for on-site IT personnel.
- **Centralized Cloud Management:** Manage all your locations, users, and policies 24/7 from a single web interface.
- **Real-Time Notifications:** Receive instant alerts for network events, security threats, and suspicious activity.
- **Multi-Tenancy:** Ideal for MSPs and large enterprises, offering isolated management capabilities.





# Sample Solution Architecture



The architecture manages all data flow between the headquarters, branches, and remote workers securely and optimally through the Ricon SASE platform. Each location is protected and monitored with central policies.

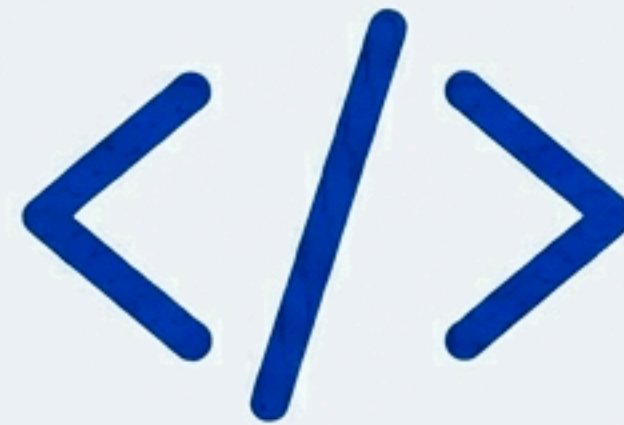


# Corporate Compliance and Easy Integration



## Legal Compliance

**With 5651 Log Management** support, It fully meets the legal requirements in Türkiye. It is ready for GDPR compliance.



## API Integration

Easily integrates with your existing network management, security and automation systems through local and remote APIs.



## Customized Applications

Use your infrastructure more efficiently by running your own custom applications (e.g., VoIP server) on Ricon Roqos Core devices.



## Summary: Why Ricon SASE & SD-WAN?



### Superior Security

With patented OmniVPN®, PrivateSASE™ and ZTNA architecture, provide proactive and layered protection, beyond ordinary solutions.



### Operational Efficiency

Zero-touch deployment, centralized cloud management, and automation capabilities to lighten the burden on your IT team and reduce operational costs.



### Future-Ready Architecture

With its flexible, scalable, and API-integrable structure, it can easily adapt to the network needs of today and tomorrow.





## Are you ready to take your network into the future?

To discover how Ricon SASE & SD-WAN solutions can add value to your business, request a live demo, or speak with our experts, contact us.



[SalesTeam@riconmobile.com](mailto:SalesTeam@riconmobile.com)



+90 212 346 26 00



Reşitpaşa Mah. İTÜ ARI 3 Teknokent No:4-Z101  
Maslak Sarıyer, İstanbul