

S9922L SERIES LTE ROUTER

APN AND CONNECTION SETTINGS

Spintek iletisim A.S.(HQ)

Ahi Evran Cad. No:1, Polaris Plaza Kat:6/32
Maslak / İstanbul / Türkiye
Phone: (+90) 212 346 26 00

Ricon Mobile Inc.(HQ)

460 Brant Street Unit 300 Burlington,
Ontario Canada
+1 (905) 336 24 50

Ricon Mobile Inc. FZE

Ras Al Khaimah U.A.E.
Phone: (+97) 172 041 010 (U.A.E)

Ricon Mobile Inc. Ltd.

F5-Building 3, FengMenAo Industrial Park,
Bantian Streets, Longgang District
Shenzhen 518129, China

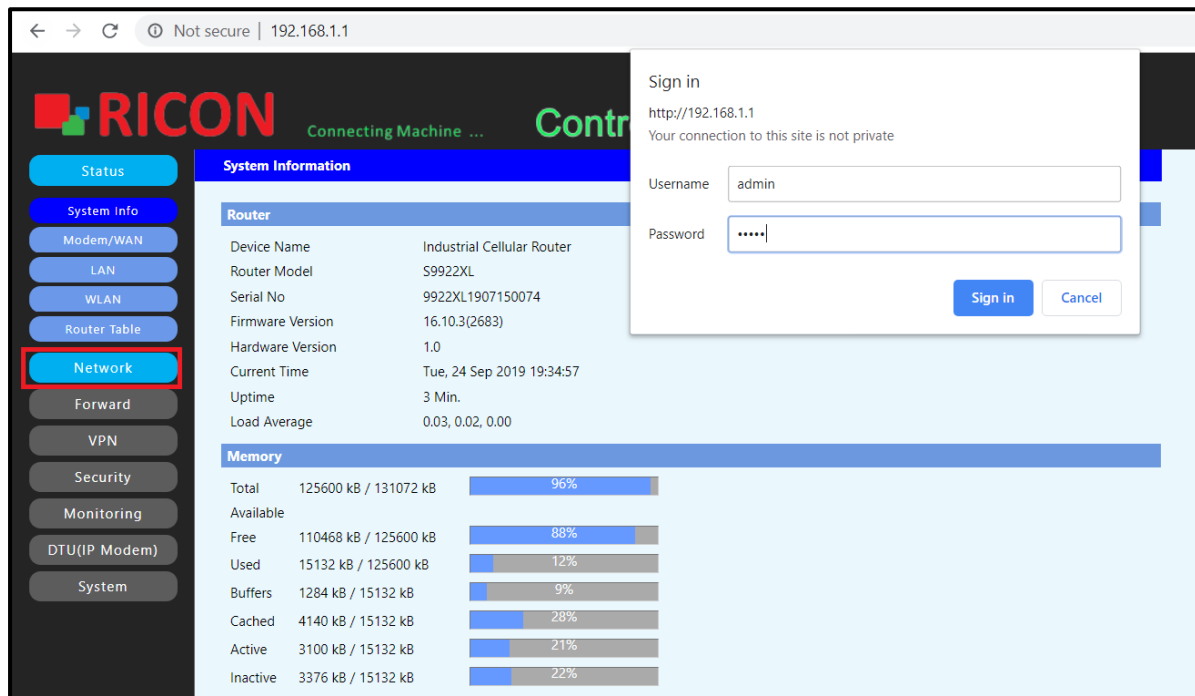
BEFORE TO START :

- Device user information:
IP: <http://192.168.1.1>
- Username : admin
Password : admin

1) APN AND CONNECTION CONFIGURATION

To make sure that the SIM card you get from the operator is connected to the internet, it is useful to test that you can connect to a smartphone or tablet and provide an internet connection before inserting the Ricon S9922L series into a device.

Steps to be followed to make the APN settings defined for the SIM card to be used in S9922L series LTE routers:



1. Network>Modem/WAN
2. For S9922L series devices with dual SIM cards, the sim slot you want to use as the main SIM card can be selected as SIM1 or SIM2.
3. Obtain the username, password and APN information from your internet service provider.
4. After entering your LTE circuit information, click the Save and Apply buttons to save your settings.

RICON Connecting Machine ... **Control Panel**

Modem/WAN

Link Backup

Backup Mode Main First(Automatic return to Main) Mutual Preparation Mode
 Link Fail to Restart (0 : Disabled)

Modem/WAN - Main Link

Connection Type
 SIM Switch/Reset
 SIM Backup Enable Disable

Main SIM SIM1 SIM2

SIM 1:

User Name Unmask
 Password Unmask
 Dial String Custom
 APN
 PIN Unmask PIN Protection
 Network Mode

SIM 2:

User Name Unmask
 Password Unmask
 Dial String Custom
 APN
 PIN Unmask PIN Protection
 Network Mode

Others:

Authentication PAP CHAP MS-CHAP MS-CHAPv2
 Fixed WAN IP Enable Disable
 Fixed WAN GW Address Enable Disable
 Force reconnect Enable Disable
 Connect Fail TimesSwitch
 Dial Fail to Restart (0 : Disabled)

Keep Alive
 Keep Alive Server IP
 Keep Alive Server IP2
 Keep Alive Interval
 Keep Alive Fail TimesSwitch

Modem/WAN - Backup Link

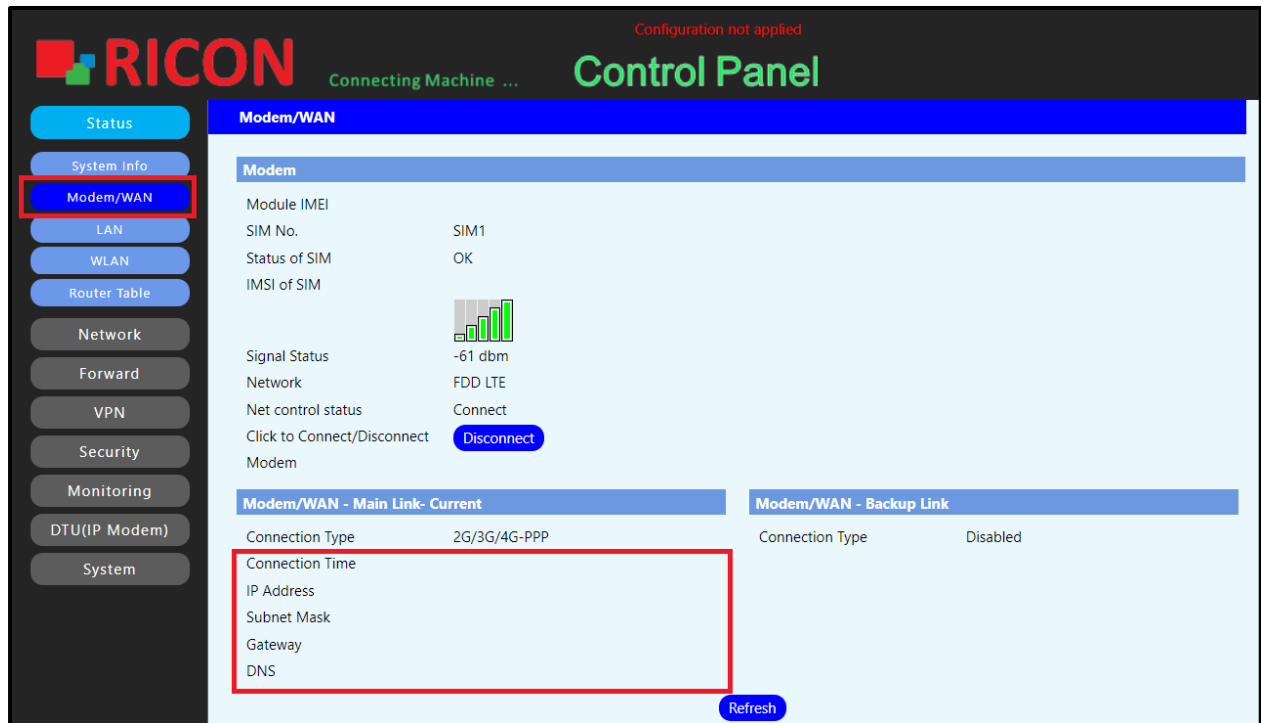
Connection Type

Optional Settings

Device Name
 Host Name
 Domain Name
 MTU

2) LTE LINK STATUS CHECK

1. Status>Modem/WAN check mobile circuit connection and other information status here.
2. Net control status if connected, your connection is complete.
3. It is recommended that the RSRP value is below -95 dBm for proper operation of the circuit.




Configuration not applied

RICON Connecting Machine ... **Control Panel**

Modem/WAN

Modem

Module IMEI
 SIM No. SIM1
 Status of SIM OK
 IMSI of SIM

Signal Status  -61 dbm
 Network FDD LTE
 Net control status Connect
 Click to Connect/Disconnect **Disconnect**
 Modem

Modem/WAN - Main Link- Current

Connection Type 2G/3G/4G-PPP

Connection Time
 IP Address
 Subnet Mask
 Gateway
 DNS

Modem/WAN - Backup Link

Connection Type Disabled

Refresh