

S9922M-LTE ROUTER CONFIGURATION IMPORT/EXPORT

Spintek iletisim A.S.(HQ)

Ahi Evran Cad. No:1, Polaris Plaza Kat:6/32
Maslak / İstanbul / Türkiye
Phone: (+90) 212 346 26 00

Ricon Mobile Inc.(HQ)

460 Brant Street Unit 300 Burlington,
Ontario Canada
+1 (905) 336 24 50

Ricon Mobile Inc. FZE

Ras Al Khaimah U.A.E.
Phone: (+97) 172 041 010 (U.A.E)

Ricon Mobile Inc. Ltd.

F5-Building 3, FengMenAo Industrial Park,
Bantian Streets, Longgang District
Shenzhen 518129, China

S9922M SERIES LTE ROUTER MODELS - CONFIGURATION IMPORT/EXPORT

BEFORE TO START :

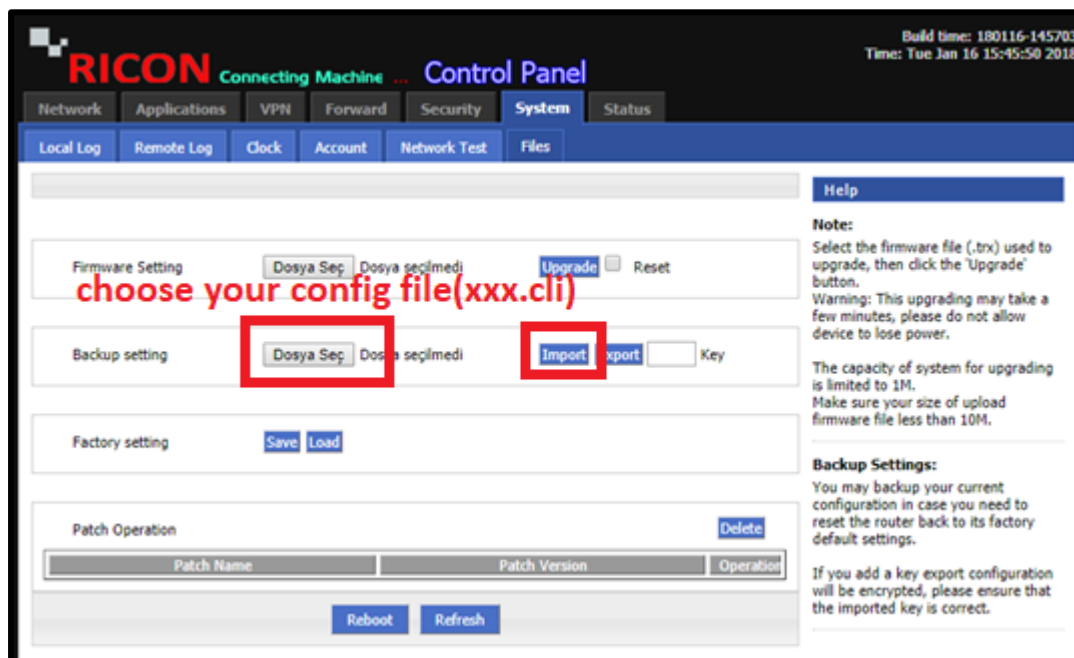
- Device user information :
IP: <http://192.168.8.1>
- Username: admin
Password: admin

1) S9922M LTE CONFIGURATION IMPORT

Here is what you need to do to transfer an existing S9922M series LTE router configuration to the device:

NOT: The configuration file extension to be imported to the device must be "cli"

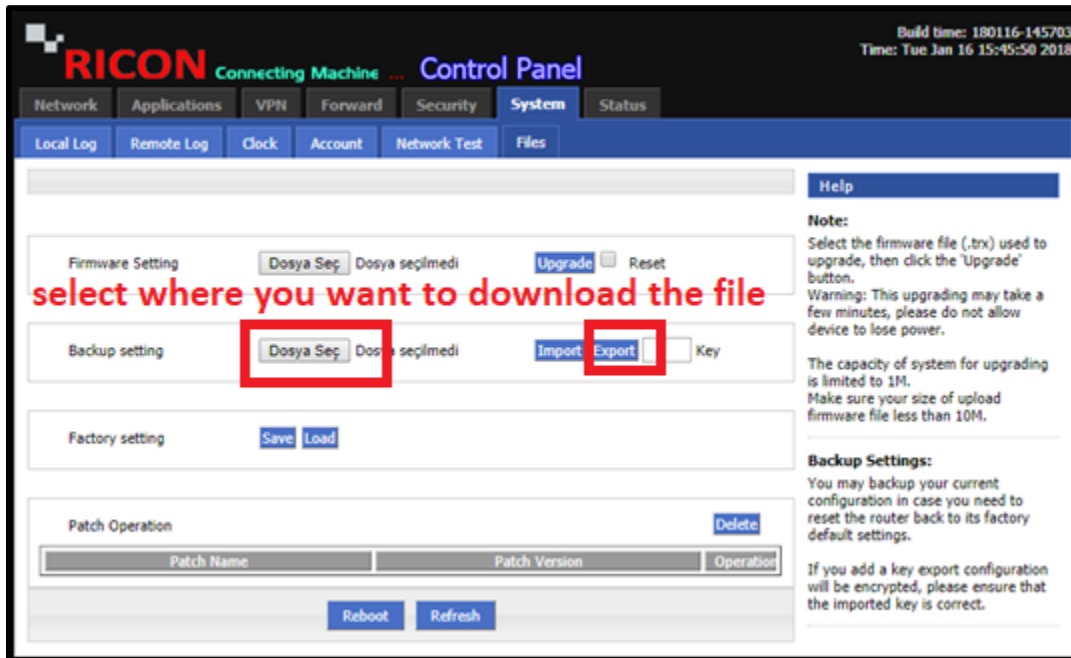
1. Select System>Files
2. Click Backup Setting – Import and select which file you will import
3. Click Reboot



After rebooting the device configuration will be imported.

2) S9922M LTE CONFIGURATION EXPORT

1. Select System>Files
2. Click Backup settings - Export and select where you want to download your configuration file.



After a short wait, you will be downloading the configuration file to your computer with a “bin” extension.