

USER MANUEL

S9960ME-LTE Series Mobile Router

CONTENT

1. FIBER SETTINGS.....	4
2. WAN SETTINGS	5
3. Wi-Fi SETTINGS	7
4. LAN/DHCP/NAT SETTINGS.....	9

CONTENT

Use Ethernet port directly connected to S9960ME-LTE Router and computer, or transferred by a switch.

This method will temporarily interrupt the communication between the computer under configuration and LAN, and the specific parameter configuration is shown as below:

IP address: 192.168.100.* (*indicates any integral between 2 to 254)

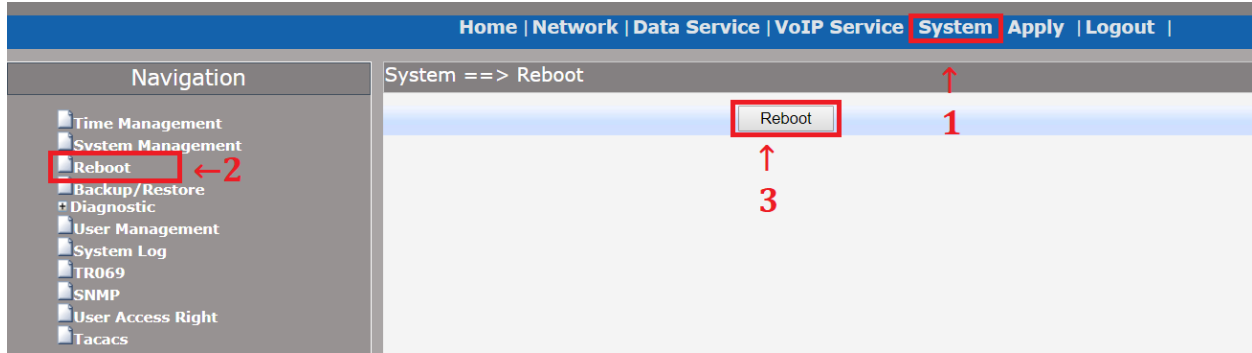
Subnet mask: 255.255.255.0

Default gateway: 192.168.100.1



Follow the steps below to reboot the device and single click the **Reboot** icon.

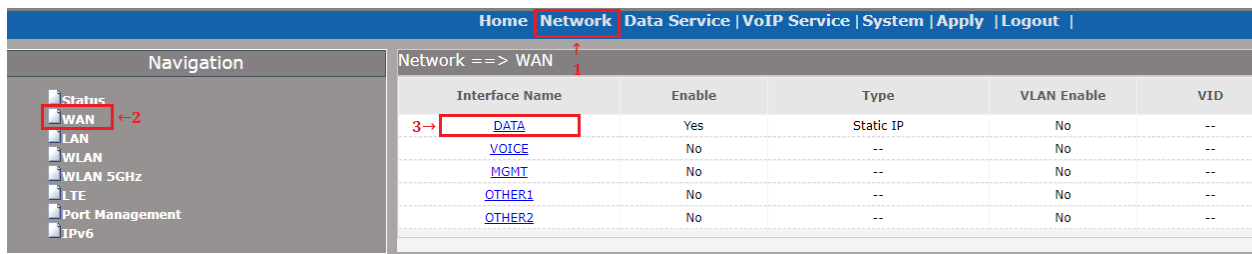
System > Reboot > Reboot



1. FIBER SETTINGS

To make a connection between your network device and S9960ME mobile router using fiber cable, you need to activate the fiber port on the mobile router. The steps to be followed for this are as follows.

Network > WAN > DATA



The VLAN information defined on your network device (switch, router) must be entered in the VLAN ID specified in the S9960ME WAN connection section. The IP address, netmask and gateway information defined under the VLAN must be entered in the places shown below.

Network ==> WAN

Interface Name	DATA
Enable	<input checked="" type="checkbox"/>
Type	Static IP ▾
1→ VLAN Enable	<input checked="" type="checkbox"/>
2→ VLAN ID	0 (1,4094)
Priority Level	0 (0,7)
Primary DNS	<input type="text"/>
Secondary DNS	<input type="text"/>
3→ IP Address	138.0.60.1 *
4→ Netmask	255.255.0.0 *
5→ Gateway	<input checked="" type="checkbox"/> 138.0.60.2
MTU	1500 (512,2042)

6→

Then click the **Save** icon and restart the device. Fiber connection will be active.

2. WAN SETTINGS

Follow the steps below to configure LTE.

Network > LTE

Home **Network** Data Service | VoIP Service | System | Apply | Logout |

Navigation

- Status
- WAN
- LAN
- WLAN
- WLAN 5GHz
- LTE** ←2
- Port Management
- IPv6

Network ==> LTE

Basic Settings

Network Type	LTE ▾
SP Network	Other ▾
Username	card (Maximum 31 Characters)
Password (Maximum 31 Characters)
Dial Number	*99# (Maximum 31 Characters)
APN	(Maximum 31 Characters)
PIN	(Maximum 31 Characters)
Connect Mode	Auto ▾
Online Mode	Always Online ▾
Enable Second APN	<input type="checkbox"/>

Enter the information you get from your operator in the following order.

Network ==> LTE

Basic Settings

	Network Type	LTE	
	SP Network	Other	
1→	Username	card	(Maximum 31 Characters)
2→	Password	****	(Maximum 31 Characters)
	Dial Number	*99#	(Maximum 31 Characters)
3→	APN	test	(Maximum 31 Characters)
4→	PIN	****	(Maximum 31 Characters)
	Connect Mode	Auto	
	Online Mode	Always Online	
	Enable Second APN	<input type="checkbox"/>	

[+Advanced Parameters](#)

	Band Select Mode	Auto	
	Application	<input type="button" value="Apply"/>	

Status

	Modem Status	Ready
	SIM Card Status	USIM not inserted
	Operation Name	
	Signal Quality	N/A
	Connection Status	Disconnected

[Export Debug File](#)

5→

Single click **Save** icon. Restart the router. LTE connection will be active.

Click to see the IP received LTE connection.

Network > LTE

Network ==> LTE

Basic Settings

Network Type: LTE

SP Network: Other

Username: card (Maximum 31 Characters)

Password: **** (Maximum 31 Characters)

Dial Number: *99# (Maximum 31 Characters)

APN: test (Maximum 31 Characters)

PIN: **** (Maximum 31 Characters)

Connect Mode: Auto

Online Mode: Always Online

Enable Second APN:

[+Advanced Parameters](#)

Band Select Mode: Auto

Application:

Status

Modem Status	Ready
SIM Card Status	Ready
Operation Name	OPERATOR NAME
Signal Quality	-68dBm
Connection Status	Connected

[Export Debug File](#)

3. Wi-Fi SETTINGS

After setting the Wi-Fi connection speed, follow the steps below to activate the Wi-Fi connection.

Network > WLAN/WLAN 5GHz

Home **Network** Data Service | VoIP Service | System | Apply | Logout |

Navigation

- Status
- WAN
- LAN
- WLAN** ←2
- WLAN 5GHz
- LTE
- Port Management
- IPv6

Network ==> WLAN 5GHz

Basic Settings | Security | WDS | WPS | Advanced Settings | Clients Info | MAC Filtering

Enable WiFi:

Channel: AutoSelect

Wireless Mode: 11vht AC/AN/A

Channel Width: 80MHz

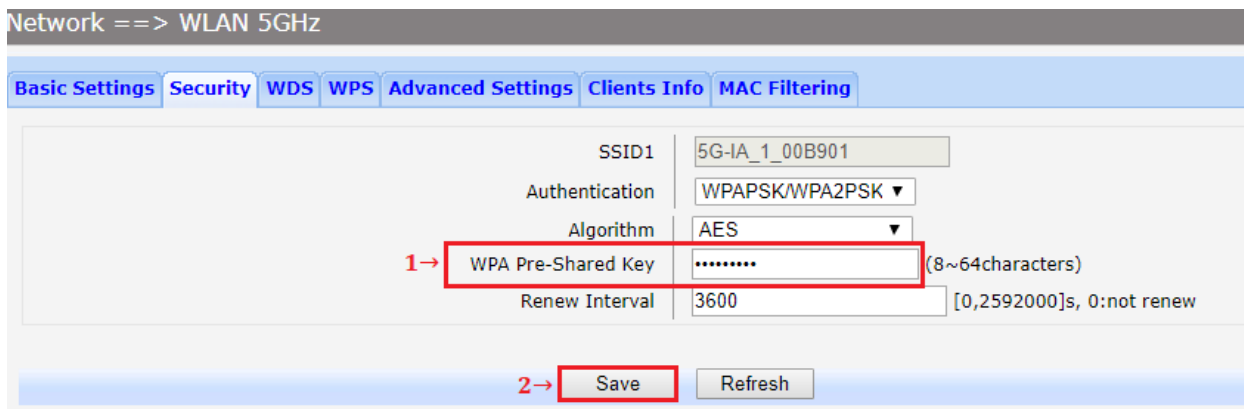
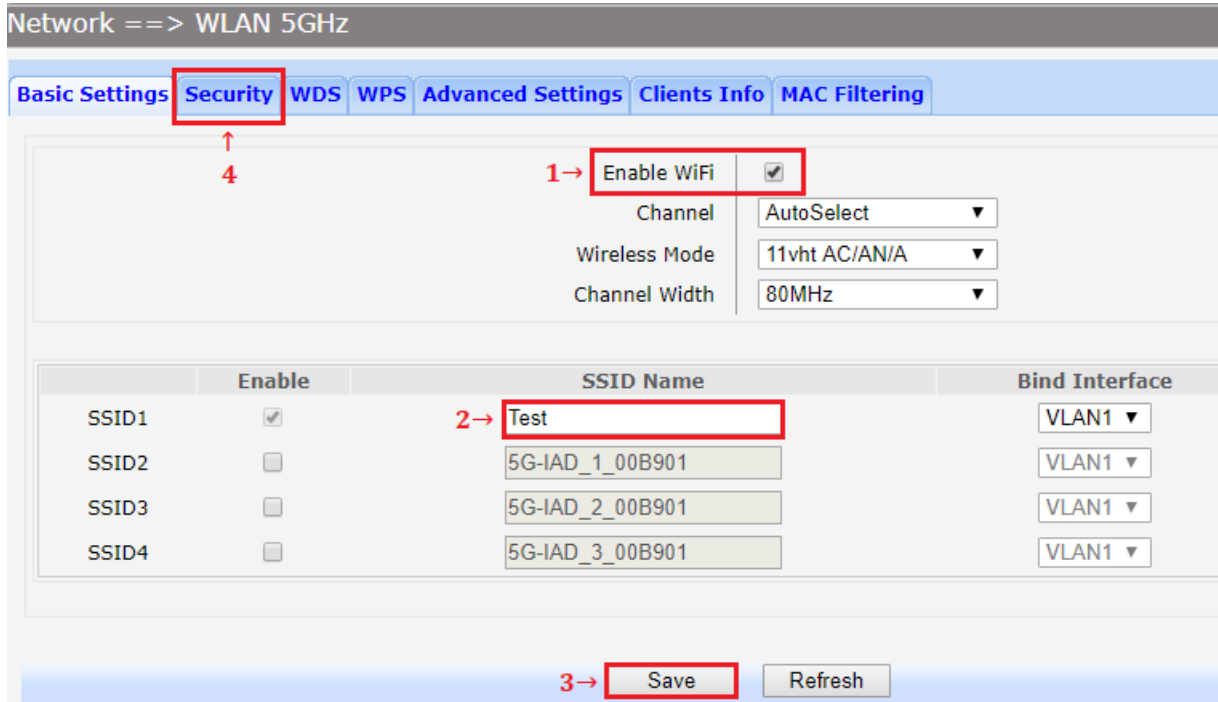
Enable	SSID Name	Bind Interface
<input checked="" type="checkbox"/>	5G-IAD_00B901	VLAN1
<input type="checkbox"/>	5G-IAD_1_00B901	VLAN1
<input type="checkbox"/>	5G-IAD_2_00B901	VLAN1
<input type="checkbox"/>	5G-IAD_3_00B901	VLAN1

Single click **“Enable Wi-Fi”** icon.

SSID1 is your Wi-Fi connection name.

Single click **Save** icon.

Single click **Security** icon.



WPA Shared Key is your Wi-Fi connection password.

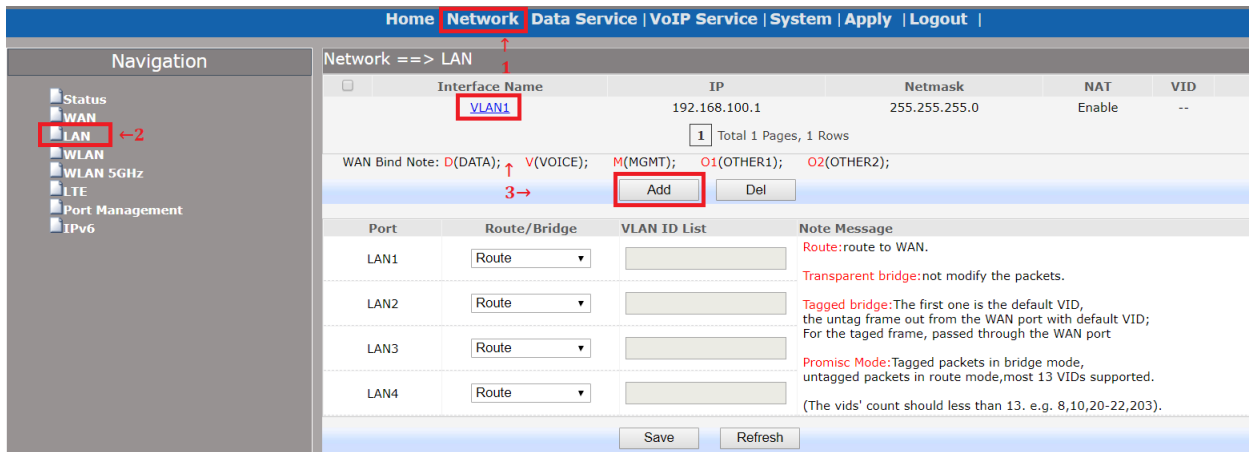
Single click **Save** icon.

Restart the router. When the device is turned on, your Wi-Fi network will be active.

4. LAN SETTINGS

LAN settings are used to manage local area network units which are connected to a S9960ME-LTE Router, make them reach to the desired network or internet regarding the network topology. Follow the steps below to change the existing LAN IP block or add another IP block. Enter the IP block you have specified and click **Save**.

Network > LAN



The screenshot displays the 'Network >> LAN' configuration page. The navigation menu on the left includes Status, WAN, LAN (selected), WLAN, WLAN 5GHz, LTE, Port Management, and IPv6. The main interface shows a table with the following data:

Interface Name	IP	Netmask	NAT	VID
VLAN1	192.168.100.1	255.255.255.0	Enable	--

Below the table, there are buttons for 'Add' and 'Del'. The 'Add' button is highlighted. The page also includes a 'WAN Bind Note' section with options for D(DATA), V(VOICE), M(MGMT), O1(OTHER1), and O2(OTHER2). At the bottom, there are 'Save' and 'Refresh' buttons.

After you enter the VLAN, IP block and subnet mask, you can request it form NAT and DHCP at this point.

Then click the **Save** icon and restart the device. LAN settings will be active.

Network ==> LAN==> Static IP

Interface Name	VLAN1 *
IP Address	192.168.100.1 *
Netmask	255.255.255.0 *
NAT	<input checked="" type="checkbox"/>
Internet Interface	DATA ▼
Enable DHCP Server	<input checked="" type="checkbox"/>
Start IP	192.168.100.100 ←1
End IP	192.168.100.200
Netmask	255.255.255.0
Gateway	192.168.100.1
Primary DNS	192.168.100.1
Secondary DNS	8.8.8.8
Lease Time(Second)	86400

[+Advanced Parameter](#)

2→

